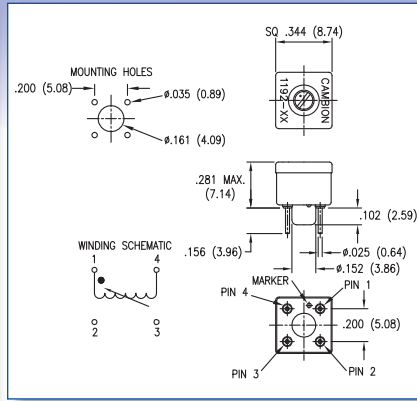
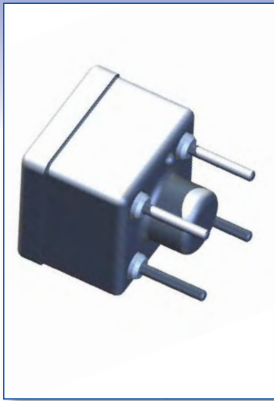


Dimensions in inches (mm)



Core Material

- 01 to -07 Carbonyl SF (Blue)
- 08 to -19 Carbonyl E (Red)
- 20 to -25 Carbonyl C (Yellow)

How to order code

558 - 1192 - XX - 00 - 00

Basic Part No.

Inductance Code

Basic Part No.	Inductance (μ H)		"Q" at L Min.	"Q" at L Max.	Test Frequency (MHz)	DCR Max. (Ω)	DC Max. (mA)	SRF Min. (MHz)	
	Min.	Max.							
558-1192	-01	0.080	0.120	50	65	25.0	0.050	1300	250
	-02	0.120	0.180	55	70	25.0	0.060	1200	250
	-03	0.180	0.270	55	70	25.0	0.100	1100	250
	-04	0.270	0.390	60	70	25.0	0.120	950	240
	-05	0.390	0.560	60	70	25.0	0.200	700	215
	-06	0.560	0.820	55	60	25.0	0.450	540	180
	-07	0.820	1.20	50	45	25.0	0.500	450	146
	-08	1.20	1.80	35	40	7.9	0.700	375	120
	-09	1.80	2.70	40	45	7.9	1.00	300	100
	-10	2.70	3.90	40	45	7.9	1.50	230	81.0
	-11	3.90	5.60	30	40	7.9	1.70	230	43.0
	-12	5.60	8.20	25	40	7.9	1.90	210	32.0
	-13	8.20	12.0	25	40	7.9	2.00	200	17.5
	-14	12.0	18.0	35	50	2.5	2.70	180	17.0
	-15	18.0	27.0	40	50	2.5	3.50	160	13.0
	-16	27.0	39.0	40	50	2.5	4.50	150	11.0
	-17	39.0	56.0	40	50	2.5	5.50	140	9.0
	-18	56.0	82.0	40	50	2.5	6.50	130	8.00
	-19	82.0	120	40	40	2.5	10.0	120	6.50
	-20	120	180	25	30	0.79	14.0	80.0	5.50
	-21	180	270	25	30	0.79	20.0	75.0	4.00
	-22	270	390	25	30	0.79	28.0	70.0	3.20
	-23	390	560	25	30	0.79	38.0	60.0	2.80
	-24	560	820	25	30	0.79	48.0	50.0	2.40
	-25	820	1200	25	30	0.79	65.0	40.0	1.90

Temperature Range: -55°C to +125°C

For RoHS Compliant add suffix -LF to the part number
 Windings are varnish impregnated and powdered iron cores are moisture proofed
 Recommended tuning tool 435-1880-01-00-00